



Rabbit anti Estrogen Receptor beta (ER beta) Polyclonal Antibody

Alternative Name(s): Estrogen receptor 2; ESR2

Order Information

- **Description:** Estrogen Receptor beta (ER beta)
- **Catalogue:** 500-4744
- **Lot:** See label
- **Size:** 100ug/200ul
- **Host:** Rabbit
- **Clone:** nan
- **Application:** IHC(P), WB
- **Reactivity:** Hu

ANTIGEN PREPARATION

A synthetic peptide corresponding to the c-terminus of human Estrogen Receptor Beta. .

BACKGROUND

ER (estrogen receptor) belongs to a member of the steroid receptor superfamily. It contains highly conserved DNA binding (DBD) and ligand binding domains (LBD). The transcriptional effects of 17 β -estradiol (E2) in the body are mediated by two distinct ERs, ER-alpha and ER-beta. ER-alpha plays an important role in differentiation by regulating target genes such as that for the progesterone receptor (PR). Both the stroma and epithelium express PR, and estrogen induces PR in the stromal and glandular epithelial cells. ER-alpha and ER-beta may have opposite effects on gene transcription. ER-beta can act as a transdominant repressor on ER-alpha transcriptional activity. ER-beta acts as a modulator of ER-alpha-mediated gene transcription in the uterus, and furthermore, that it is responsible for down regulation of PR in the luminal epithelium.

PURIFICATION

The Rabbit IgG is purified by Epitope Affinity Purification

FORMULATION

This affinity purified antibody is supplied in sterile Phosphatebuffered saline (pH7.2) containing antibody stabilizer

SPECIFICITY

This antibody recognizes ~53 kDa of human estrogen receptor beta. It also reacts to mouse and rat. The other species are not tested.

STORAGE

The antibodies are stable for 24 months from date of receipt when stored at -20oC to -70oC. The antibodies can be stored at 2oC-8oC for three month without detectable loss of activity. Avoid repeated freezing-thawing cycles.

APPLICATIONS/SUGGESTED WORKING DILUTIONS*

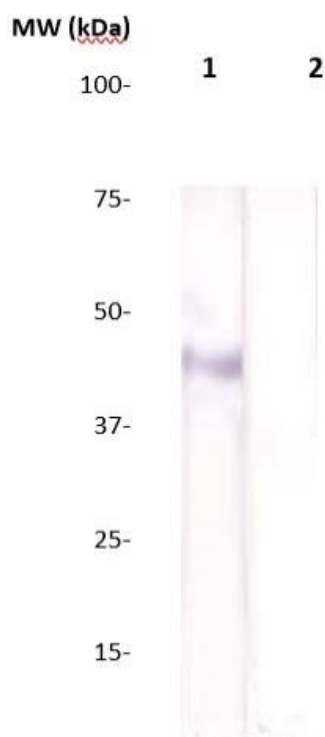
- Western Blot: 0.1-1 μ g/ml
- ELISA: 0.01-0.1 μ g/ml
- Immunoprecipitation: 2-5 μ g/ml
- IHC: 2-10 μ g/ml
- Flow cytometry: Not tested
- Molecular Weight: 53.0
- Positive Control: Kidney Tissue
- Cellular Location: Cell Membrane

*Optimal dilutions should be determined by researchers for the specific applications.

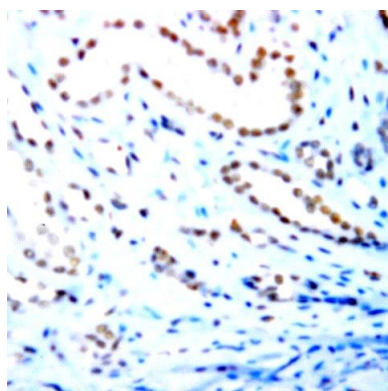
FOR RESEARCH USE ONLY.

AbboMax, Inc 2528 Qume Drive, Suite 8, San Jose, California 95131, USA
1 408-573-1898 (Tel). 1 408-573-1858 (Fax). www.abbomax.com info@abbomax.com

DATA ATTACHMENTS



Western Blot: The whole cell lysates derived from MCF-7 were immunoblotted by Rabbit anti-ER-beta (Cat#500-4744) at 1:500 (Lane 1). The immunoreactive band is blocked by pre-incubation of immunizing peptide (lane 2). Observed a major immunoreactive band at molecular weight ~42kDa.



Immunohistochemistry: Human breast cancer tissue (FFPE) stained with Anti-ER-beta antibody (Cat# 500-4744) at 1:200 for 10 min @ RT. Staining of formalin-fixed tissue requires boiling tissue sections in 10 mM Citrate Buffer, pH 6.0 for 10 min followed by cooling at RT for 20 min.

REFERENCES

FOR RESEARCH USE ONLY.

AbboMax, Inc 2528 Qume Drive, Suite 8, San Jose, California 95131, USA
1 408-573-1898 (Tel). 1 408-573-1858 (Fax). www.abbomax.com info@abbomax.com